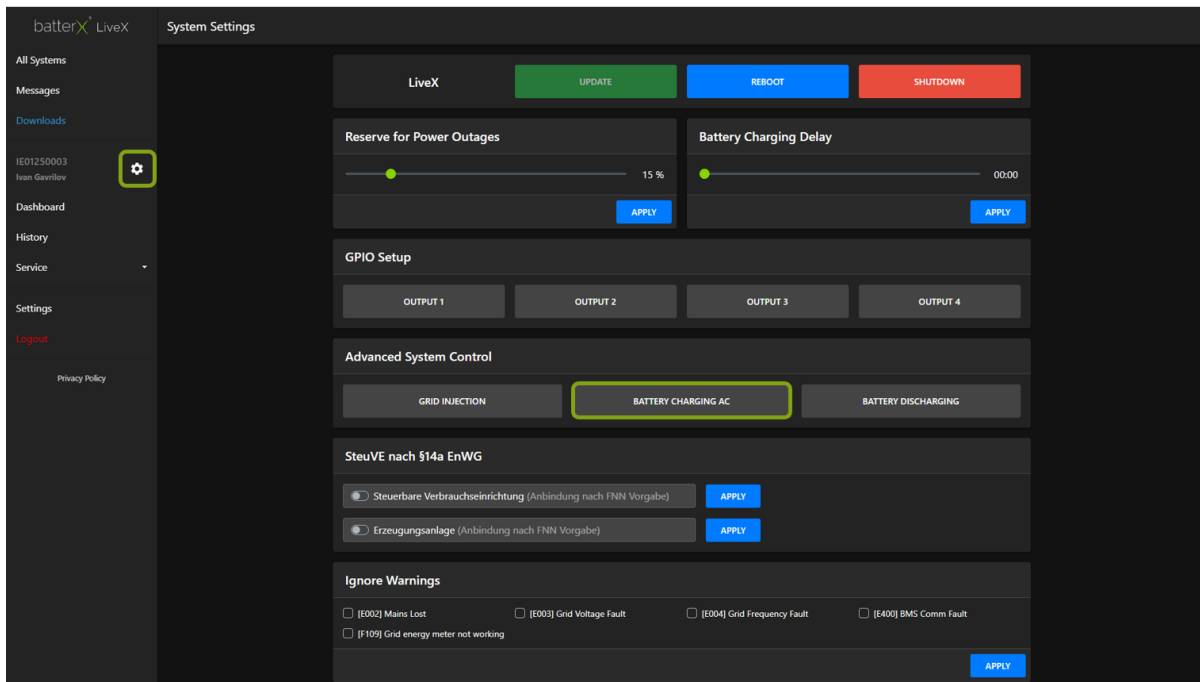


9. TIME-CONTROLLED BATTERY CHARGING

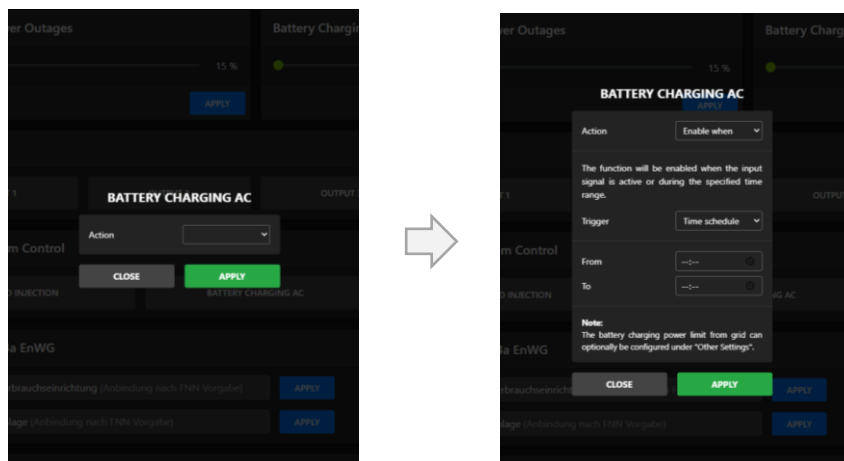


The settings explained in this chapter can only be configured by the installer or batterX itself. As an end customer, please contact your installer.

batterX enables the battery storage unit to be charged from the grid at fixed times. To set up the control system, log in to the portal after completing the installation routine. Then click on the gear icon on the left-hand side to access the system settings. Click on "BATTERY CHARGING AC" to access the setup.



Select "Enable when" from the pull-down menu and a settings window will open.

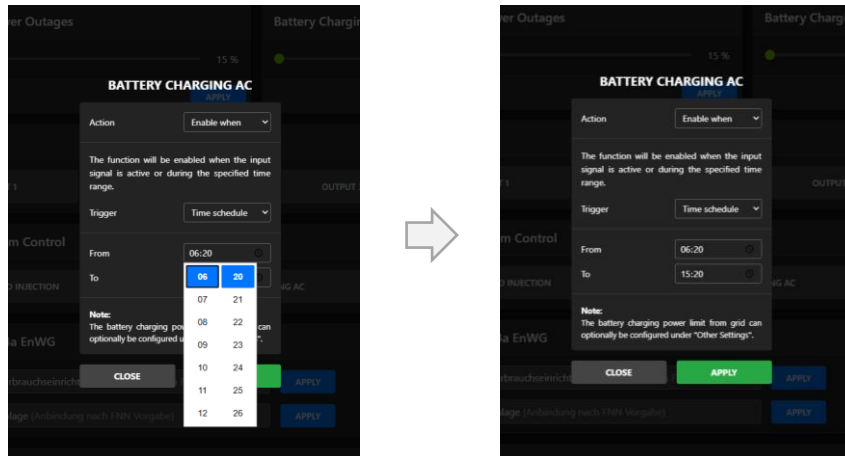


- 1. Action:** Here you can enable or disable the AC battery charging.
- 2. Trigger:** **Time schedule:** Select "Time schedule" if you want to use the AC battery charging for a specific time period.
From ... To: Enter the desired period during which AC battery charging should be activated, for example from 02:00 to 04:00 am.



Please note: During this period, AC battery charging is constantly activated, and the system attempts to charge the storage unit from the grid. batterX recommends selecting times that allow the storage unit to be fully charged once. To do this, the capacity of the storage unit and the charging power must be taken into account.

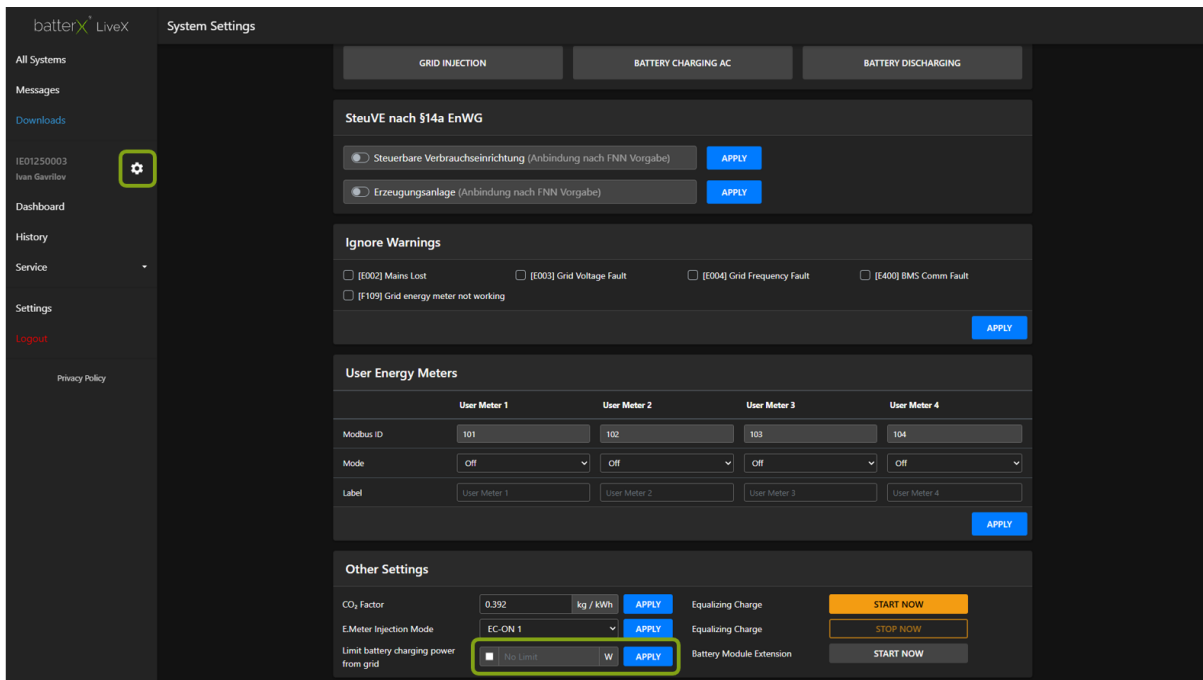




Then click "APPLY" to save the settings.

Optional power limitation

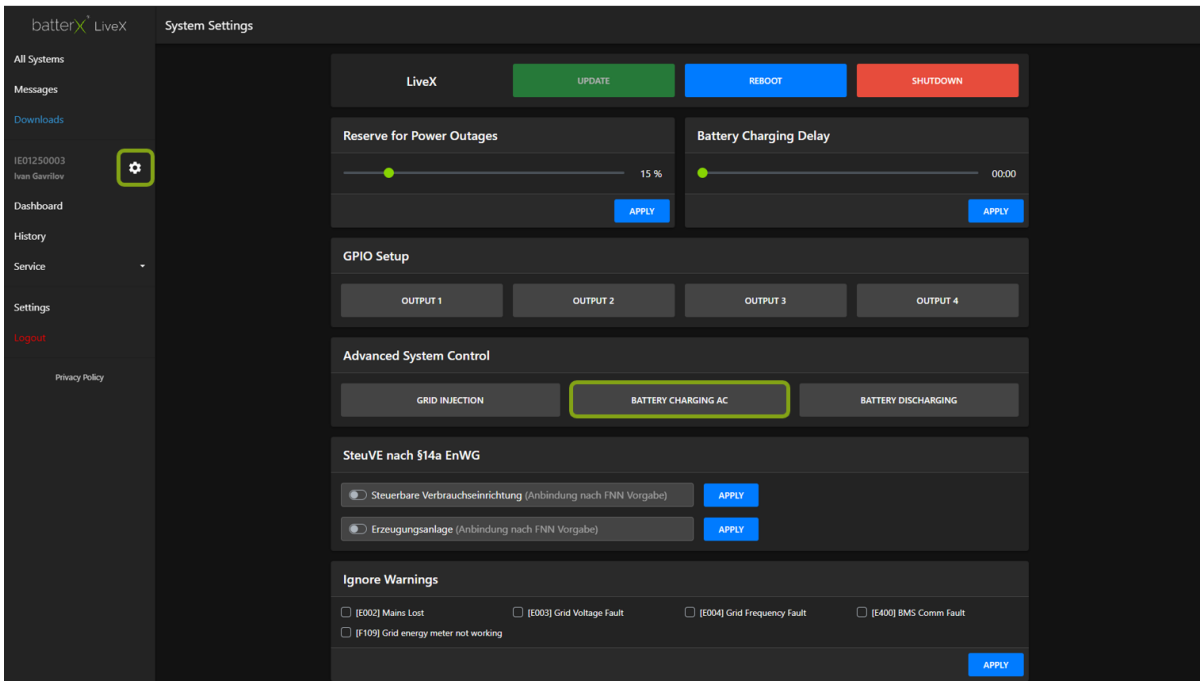
By default, the batteries are charged at C0.5. This means, for example, that a 10 kWh storage unit is charged at 5 kW. To increase the service life of the batteries, it is advisable to reduce the charging power and charge the storage unit over a longer period of time to protect the batteries. You can set this power limit in the system settings. To do this, click on the gear icon on the left-hand side to open the settings. Then scroll down to the 'Other settings' section. Tick the box next to "Limit battery charging power from grid" and then enter the desired charging power in Watts. Finally, click on "Apply" to save your settings.



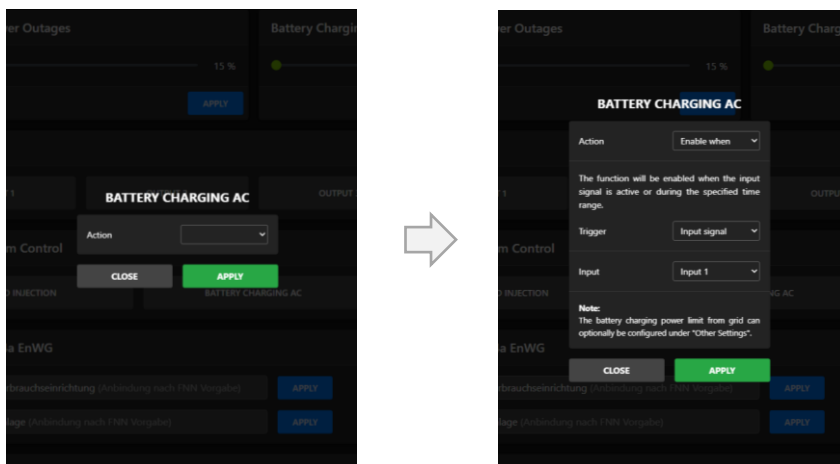
10. SIGNAL-CONTROLLED BATTERY CHARGING

! The settings explained in this chapter can only be configured by the installer or batterX itself. As an end customer, please contact your installer.

batterX enables active control of battery charging from the grid via an input signal. To set up the control, log in to the portal after completing the installation routine. Then click on the gear icon on the left-hand side to access the system settings. Click on 'BATTERY CHARGING AC' to access the setup.



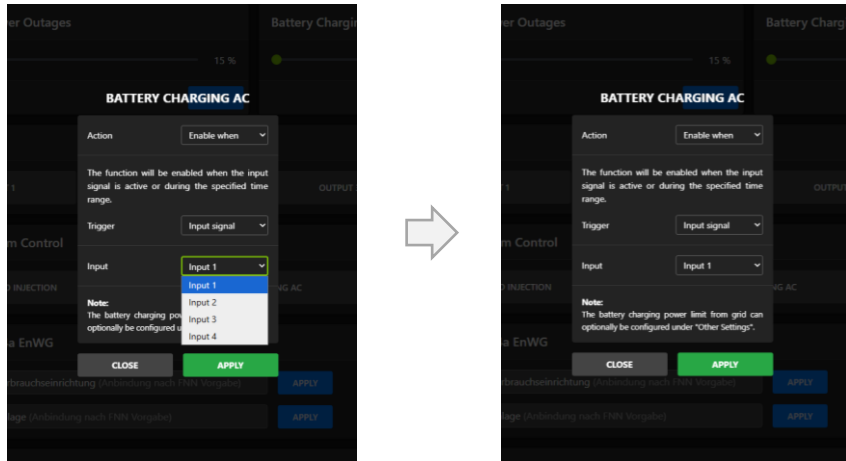
Select "Enable when" from the pull-down menu and a settings window will open.



- 1. Action:** Here you can enable or disable the AC battery charging.
- 2. Trigger:** **Input signal:** You can activate AC battery charging via a controlled input (GPIO). To do this, select 'Input signal' in this field and the desired input in the field below. A description of the wiring for these inputs can be found in Chapter III EMX.

! Please note: AC battery charging is activated as long as the input signal is active. The system will attempt to charge the storage unit from the grid. batterX recommends controlling the input signal so that the storage unit can be fully charged once. To do this, the capacity of the storage unit and the charging power must be taken into account.





Then click "APPLY" to save the settings.

Optional power limitation

By default, the batteries are charged at C0.5. This means, for example, that a 10 kWh storage unit is charged at 5 kW. To increase the service life of the batteries, it is advisable to reduce the charging power and charge the storage unit over a longer period to protect the batteries. You can set this power limit in the system settings. To do this, click on the gear icon on the left-hand side to open the settings. Then scroll down to the 'Other settings' section. Tick the box next to "Limit battery charging power from grid" and then enter the desired charging power in watts. Finally, click on "Apply" to save your settings.

